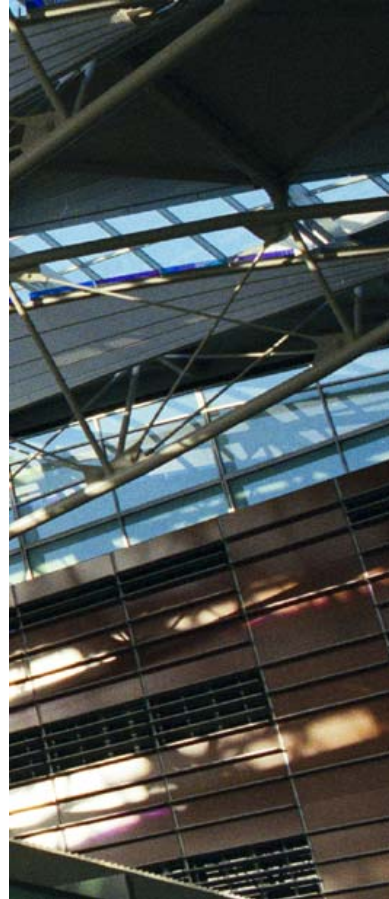


**Airfield Development Planning**



**Chapter 1 Executive Summary**

- I. Introduction ..... 1-1
- II. Study Results ..... 1-2
  - A. Activity Forecasts ..... 1-2
  - B. Dimensional Requirements and Layouts ..... 1-2
    - 1. Alternative A-3 ..... 1-2
    - 2. Alternative BX ..... 1-4
    - 3. Alternative BX-2 ..... 1-4
    - 4. Alternative BX-R ..... 1-4
    - 5. Alternative F-2 ..... 1-4
    - 6. Alternatives J and JR ..... 1-4
    - 7. Derivative Alternatives to BX-R ..... 1-4
      - a. Alternative BX-3 ..... 1-4
      - b. Alternative BX-4 ..... 1-6
      - c. Alternative BX-5 ..... 1-6
      - d. Alternative BX-6 ..... 1-6
  - C. Airspace and Modeling Assumptions ..... 1-6
    - 1. Airspace and Airfield Configurations ..... 1-6
    - 2. Flight Schedules (Aircraft Operations) ..... 1-7
    - 3. Weather ..... 1-7
    - 4. Runway Utilization ..... 1-8
  - D. Simulation Results ..... 1-8
    - 1. Dynamic Airspace Usage ..... 1-9
    - 2. Runway 28L Open/Closed Analysis ..... 1-9
    - 3. West Plan Crosswind and Tailwind Analysis ..... 1-9
    - 4. Gate Utilization ..... 1-10
    - 5. SFO/OAK Departure Interaction ..... 1-10
  - E. Noise Analyses ..... 1-10
    - 1. No-Build (Constrained with Technology) ..... 1-10
    - 2. No-Build (Demand Management) ..... 1-10
    - 3. Alternative A-3 ..... 1-10
    - 4. Alternative BX-2 ..... 1-10
    - 5. Alternative BX-R ..... 1-11
    - 6. Alternative F-2 ..... 1-11
    - 7. Alternative BX-6 ..... 1-11
  - F. Obstructions and Instrument Procedures (TERPS) ..... 1-11
  - G. Airport Facilities ..... 1-11
- III. Alternatives to be Included in the Environmental Documents ..... 1-16
  - A. Capacity/Delay ..... 1-16
  - B. Reduction of Human Noise Exposure ..... 1-16
  - C. New Large Aircraft ..... 1-16
  - D. Evaluation Matrix ..... 1-16
- IV. Next Steps ..... 1-16

**Chapter 2 Activity Forecasts**

- I. Unconstrained Forecast Background and Purpose ..... 2-1
- II. History ..... 2-1
  - A. Socioeconomic ..... 2-1
    - 1. Historical Regional Population ..... 2-1
    - 2. Historical Regional Employment ..... 2-1
    - 3. Historical Regional Income ..... 2-1
  - B. Aviation Activity ..... 2-1
    - 1. Historical Air Passenger Activity ..... 2-1
    - 2. Historical Air Cargo Volumes ..... 2-2
    - 3. Historical Aircraft Operations ..... 2-3
  - C. Reconciliation of Current Activity Numbers ..... 2-3
- III. Forecasts ..... 2-6
  - A. General Forecast Assumptions ..... 2-6
    - 1. Unconstrained Forecasts ..... 2-6
    - 2. Regulatory Assumptions ..... 2-6
    - 3. Economic Assumptions ..... 2-6
  - B. Domestic Passenger Forecast ..... 2-6
    - 1. Methodology, Assumptions, and Data Sources ..... 2-6
    - 2. Market Definitions ..... 2-7
    - 3. Passenger O&D Forecast ..... 2-9
    - 4. New Non-Stop Market Assumptions ..... 2-14
    - 5. Outbound Passengers ..... 2-17
    - 6. Load Factor and Seat Departure Forecast ..... 2-17
    - 7. Airport Disaggregation ..... 2-20
    - 8. Passenger Forecasts by Airport ..... 2-23
    - 9. Non-Scheduled Passenger Activity ..... 2-43
  - C. International Passenger Forecast ..... 2-44
    - 1. Methodology, Assumptions, and Data Sources ..... 2-44
    - 2. Regional Forecasts Studies ..... 2-45
    - 3. Bay Area Forecasts ..... 2-46
    - 4. New Markets ..... 2-46
    - 5. Passenger Forecast ..... 2-46
    - 6. Load Factor and Seat Departure Forecast ..... 2-46
    - 7. Airport Disaggregation ..... 2-46
    - 8. Passenger Forecasts by Airport ..... 2-59
  - D. Cargo Forecast ..... 2-59
    - 1. Assumptions and Data Sources ..... 2-59
    - 2. Tonnage Forecasts ..... 2-61
      - a. World Air Cargo Forecasts ..... 2-61
      - b. San Francisco International Airport Forecast ..... 2-61
      - c. Oakland International Airport Forecast ..... 2-61
      - d. San Jose International Airport Forecast ..... 2-62

3. Air Freight on Passenger Carriers .....	2-62	7. Summary of Domestic Passenger Reductions Due to Delay .....	2-84
4. Aircraft Operations Forecasts .....	2-62	8. Aircraft Up-gauging.....	2-85
5. Summary of Air Cargo Forecasts .....	2-63	G. Response to Constraint – International Service .....	2-86
E. Air Taxi and Other .....	2-63	H. INM Fleet Mix For Constrained Forecasts .....	2-88
1. Definitions and Descriptions .....	2-63	V. Demand Management/Slot Controls Forecasts .....	2-90
2. Assumptions and Data Sources .....	2-63	A. Introduction .....	2-90
3. Peak Month .....	2-66	B. Demand Management/Slot Controls Approach .....	2-90
4. 1999 Air Taxi Operations .....	2-66	1. Demand Management/Slot Controls Description .....	2-90
5. Air Taxi Forecasts – Annual Operations .....	2-67	2. Methodology .....	2-90
6. Air Taxi Forecasts – Peak Month, Average Day .....	2-67	3. General Forecast Assumptions .....	2-91
7. Average Annual Day Operations .....	2-67	a. Physical and Policy Constraints .....	2-91
F. General Aviation and Military .....	2-67	b. Regulatory Assumptions.....	2-91
1. Assumptions and Data Sources .....	2-67	c. New Technology.....	2-92
2. Peak Month .....	2-68	d. Economic Assumptions .....	2-92
3. 1999 General Aviation and Military Operations .....	2-68	e. International Political Environment .....	2-92
4. General Aviation Forecasts – Annual Operations .....	2-68	f. Fuel Assumptions .....	2-92
5. General Aviation Forecasts – Peak Month, Average Day .....	2-68	g. Environmental Factors .....	2-92
6. Annual Day Operations .....	2-69	h. National Airspace System .....	2-92
7. Military Operations Forecast .....	2-69	i. Airline Consolidation .....	2-92
G. Annual Summary .....	2-69	j. New Entrants .....	2-92
1. Passenger Summary .....	2-69	k. Effect of September 2001 Terrorist Attacks .....	2-92
2. Aircraft Operations Summary .....	2-69	C. Preliminary Analyses .....	2-92
H. Daily Schedules .....	2-70	1. Compare Recent Bay Area Forecasts .....	2-93
1. Average Day Peak Month .....	2-70	2. Compare SOIA/PRM Forecasts with Proposed Slot Controls .....	2-94
2. Average Annual Day .....	2-74	3. Capacity Analysis of OAK and SJC.....	2-94
IV. Constrained Forecasts .....	2-75	a. Terminal Area Capacity .....	2-95
A. Constrained Forecast Approach .....	2-75	1) Assumptions .....	2-95
B. Constrained No-Build Alternative .....	2-75	2) San Jose Analysis .....	2-95
C. Synopsis of Previous Analysis .....	2-75	3) Oakland Analysis .....	2-96
D. Selection of Constraint Threshold .....	2-75	b. Airfield Analysis .....	2-97
1. Justification for Threshold of Delay .....	2-75	c. Summary .....	2-97
2. Analysis and Results .....	2-76	4. Market Analysis of Proposed SFO Slot System .....	2-97
E. Constrained Operations Forecasts .....	2-76	D. Market-By-Market Analyses of Three SFO Slot Scenarios for 2007 and 2015 .....	2-99
F. Response to Constraint – Domestic Service .....	2-78	1. Detailed Approach and Assumptions .....	2-99
1. Introduction.....	2-78	2. Results: Slot Scenario 1-30 Arrivals.....	2-102
2. Alternative One Domestic Service Assumptions.....	2-78	3. Results: Slot Scenario 2-34 Arrivals.....	2-102
a. Analysis Assumptions.....	2-79	4. Results: Slot Scenario 3-38 Arrivals.....	2-102
3. Results of the Analysis.....	2-81	E. Passenger Forecasts by Slot Scenario .....	2-102
4. Reductions Due to Changes in Commuter Markets .....	2-81	1. Domestic Forecast Approach .....	2-102
a. Alternative Hub Connections.....	2-82	2. Domestic Forecast Results .....	2-103
b. Alternative Transportation Modes.....	2-82	3. International Forecast Approach .....	2-107
5. Reductions Due to Changes in Western Markets .....	2-82	4. International Forecast Results .....	2-107
6. Reductions Due to Changes in Non-Western Markets .....	2-84	5. Passenger Summary.....	2-111

**San Francisco  
International  
Airport**



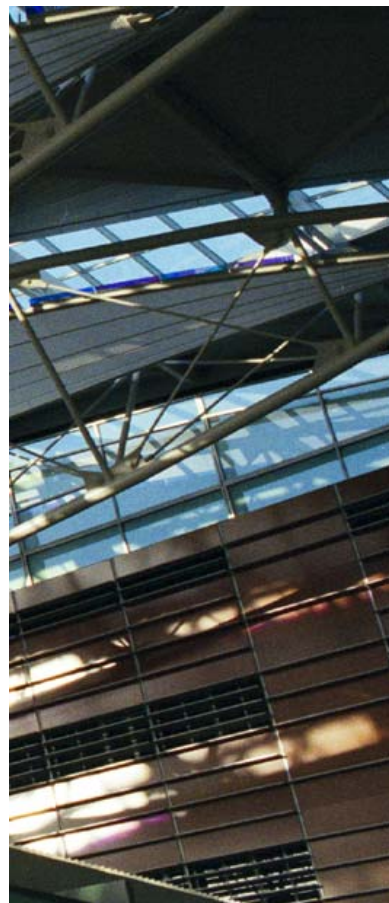
**Airfield Development Planning**

- F. Demand Management/Slot Controls Cargo Forecasts ..... 2-111
  - 1. Approach ..... 2-111
  - 2. Slot Scenario 1: 30 Slots ..... 2-112
  - 3. Slot Scenario 2: 34 Slots ..... 2-112
  - 4. Slot Scenario 3: 38 Slots ..... 2-112
- G. Demand Management/Slot Controls Operations Forecasts by Slot Scenario at SFO, OAK and SJC ..... 2-113
  - 1. Slot Scenario 1: 30 Slots ..... 2-113
  - 2. Slot Scenario 2: 34 Slots ..... 2-113
  - 3. Slot Scenario 3: 38 Slots ..... 2-116
- H. Demand Management/Slot Controls Event Files by Slot Scenario for 2007 and 2015 at SFO, OAK and SJC ..... 2-116
  - 1. Slot Scenario 1: 30 Slots ..... 2-116
  - 2. Slot Scenario 2: 34 Slots ..... 2-116
  - 3. Slot Scenario 3: 38 Slots ..... 2-118

**Chapter 3 Dimensional Requirements and Alternative Layouts**

- I. Introduction ..... 3-1
- II. Airplane Approach Category and Design Group ..... 3-1
  - A. Aircraft Approach Category ..... 3-1
  - B. Airplane Design Group ..... 3-1
- III. Runway Orientation and Length ..... 3-2
  - A. Runway Orientation ..... 3-2
  - B. Runway Length ..... 3-2
    - 1. Assumptions and References ..... 3-3
    - 2. Runway Length Requirements: Long Haul International Departures ..... 3-4
    - 3. Runway Length Requirements: Long Haul Domestic Departures ..... 3-4
    - 4. Landing Runway Length Requirements ..... 3-4
      - a. Aircraft Operating Weights ..... 3-5
      - b. Category IIIb Landing Lengths ..... 3-5
- IV. Runway to Runway Separation Criteria ..... 3-5
  - A. VFR Operations ..... 3-6
  - B. IFR Operations ..... 3-6
- V. Runway/Taxiway Separation Criteria ..... 3-7
- VI. Runway/Taxiway Geometric Standards ..... 3-7
  - A. Runway Obstacle Free Zone ..... 3-7
    - 1. Runway Obstacle Free Zone ..... 3-7
    - 2. Inner-approach OFZ ..... 3-7
    - 3. Inner-transitional OFZ ..... 3-7
  - B. Runway Object Free Area ..... 3-8
  - C. Runway Safety Area ..... 3-8
  - D. FAR Part 77 – Primary Surface ..... 3-8

- E. Runway Protection Zone ..... 3-8
- F. Runway Shoulder ..... 3-8
- G. Runway Blast Pad ..... 3-8
- H. Clearway ..... 3-8
- I. Stopway ..... 3-8
- J. Taxiway Safety Area ..... 3-9
- K. Taxiway Shoulder ..... 3-9
- L. Taxilane ..... 3-9
- M. Apron Taxiway ..... 3-9
- N. Aircraft Parking Limit Line (APLL) ..... 3-9
- O. Building Restriction Line (BRL) ..... 3-9
- VII. Exit Taxiways and Taxiway Fillet Design ..... 3-9
  - A. Exit/Entrance Taxiway Design ..... 3-9
  - B. Right-Angled Exit Taxiways ..... 3-9
  - C. 45 Degree Acute-Angle Exit Taxiway ..... 3-9
  - D. 30 Degree Acute-Angled Exit Taxiway ..... 3-9
  - E. Spiral Geometry Exit Taxiway ..... 3-10
  - F. Location of Exit Taxiways ..... 3-10
  - G. Entrance Taxiway Design ..... 3-10
  - H. Taxiway Fillet Design ..... 3-11
- VIII. Surface Gradient and Line-of-Sight ..... 3-11
  - A. Runways ..... 3-11
  - B. Runway Safety Area ..... 3-11
  - C. Runway Blast Pads ..... 3-11
  - D. Taxiways and Taxiway Safety Areas ..... 3-11
  - E. Taxiways ..... 3-13
- IX. FAR Part 77 ..... 3-13
  - A. Primary Surface ..... 3-13
  - B. Approach Surface ..... 3-13
  - C. Transitional Surfaces ..... 3-13
- X. Separation Standards For the New Large Aircraft ..... 3-13
  - A. Runway to Taxiway Separation ..... 3-13
  - B. Taxiway to Taxiway Separation ..... 3-14
- XI. Alternatives Development ..... 3-14
  - A. No Build Alternatives ..... 3-14
    - 1. Do-Nothing ..... 3-14
    - 2. Technology Enhancements ..... 3-14
    - 3. System Management ..... 3-14
  - B. Runway Reconfiguration Alternatives ..... 3-14
    - 1. Alternative A-3 ..... 3-14
    - 2. Alternative BX ..... 3-14
    - 3. Alternative BX-2 ..... 3-14
    - 4. Alternative BX-Refined ..... 3-16



- 5. Alternative F-2 .....3-16
- 6. Alternative J and J Refined .....3-16
- XII. Existing Airfield System .....3-16
- XIII. Shared Build Alternative Goals .....3-16
  - A. Taxiway Z Free Flow/Runways 28R/28L Safety AreaImprovement .....3-16
    - 1. Constraints .....3-16
    - 2. Alternative Runway Length Configurations – Runway 10L/28R .....3-16
    - 3. TERPS/RNAV Analysis .....3-18
    - 4. Runway 10L Displaced Threshold Analysis .....3-18
    - 5. Declared Distance Analysis .....3-18
    - 6. Summary .....3-18
  - B. Service Road Siting and Width of Platforms .....3-20
  - C. Relocation of Taxiway L and C .....3-20
  - D. Runway 1L Threshold Location .....3-20
- XIV. Refined Airfield Layouts .....3-23
  - A. No Build Alternatives .....3-23
    - 1. Insufficient IFR Arrival Capacity .....3-23
    - 2. Insufficient IFR Departure Capacity .....3-23
    - 3. Noise Impacts .....3-23
    - 4. New Large Aircraft .....3-23
  - B. Alternative A3 .....3-23
  - C. Alternative BX .....3-24
  - D. Alternative BX-2 .....3-24
  - E. Alternative BX Refined .....3-24
  - F. Alternative F2 .....3-24
  - G. Alternative J Refined .....3-30
- XV. Variations To Alternative BX-Refined .....3-30
  - A. Alternative BX-3 .....3-30
  - B. Alternative BX-4 .....3-30
  - C. Alternative BX-5 .....3-30
  - D. Alternative BX-6 .....3-30
  - E. Variations to Alternative A-3 .....3-36
  - F. The NLA with No-Build Alternatives .....3-36
    - 1. Operational Assumptions .....3-36
    - 2. Current Dimensional Restrictions .....3-36
    - 3. Preliminary Airfield Improvements .....3-36

## Chapter 4 Obstructions and TERPS Analyses

- I. Introduction .....4-1
- II. FAR Part 77 Criteria .....4-1
  - A. Primary Surface .....4-2
  - B. Horizontal Surface .....4-2
  - C. Conical Surface .....4-2

- D. Approach Surface .....4-2
- E. Transitional Surfaces .....4-2
- F. FAR Part 77 Standards .....4-2
- G. Notice of Construction or Alteration .....4-2
- H. Obstruction Standards .....4-3
- III. Application of Obstruction Criteria To the Runway Reconfiguration Alternatives .....4-3
  - A. Airfield Layout Plans .....4-3
  - B. Airport Airspace Drawings .....4-3
- IV. Notification Requirements .....4-3
- V. Objects To Be Marked and Lighted .....4-3
- VI. Terminal Instrument Procedures (TERPS) .....4-3
- VII. General Discussion of TERPS Analysis .....4-9
  - A. Alternatives Reviewed .....4-9
  - B. Method of Analysis .....4-9
    - 1. Sources for Ground Terrain and Obstructions .....4-9
    - 2. Coordinate System Used for Base Map .....4-9
    - 3. Conversion of Coordinates Procedures .....4-9
    - 4. Runway End Coordinates .....4-9
    - 5. FAA Standards Used For Analysis .....4-9
    - 6. Final Approach Surface .....4-9
    - 7. Missed Approach Surfaces .....4-9
- VIII. West Flow Analysis .....4-10
  - A. Runway 28R with 4,300 Foot Spacing .....4-10
    - 1. CAT I ILS Approach .....4-10
    - 2. CAT II and III ILS Approaches .....4-11
    - 3. TERPS Departure Surface Analysis .....4-11
  - B. Runway 28R with 3,400 Foot Spacing .....4-11
    - 1. CAT I Approach .....4-11
    - 2. CAT II/III Approach .....4-11
    - 3. TERPS Departure Surface Analysis .....4-12
  - C. Runway 28C .....4-12
    - 1. CAT I Approach .....4-12
    - 2. CAT II/III Approach .....4-12
    - 3. TERPS Departure Surface Analysis .....4-12
  - D. Runway 28L .....4-12
    - 1. TERPS Departure Surface Analysis .....4-12
- IX. Southeast Flow Analysis .....4-12
  - A. Runway 19R .....4-12
    - 1. CAT I Approach .....4-12
    - 2. CAT II /III Approach .....4-13
    - 3. TERPS Departure Surface Analysis .....4-13
  - B. Runways 19R and 21 .....4-13
  - C. Runway 19L .....4-13

## San Francisco International Airport



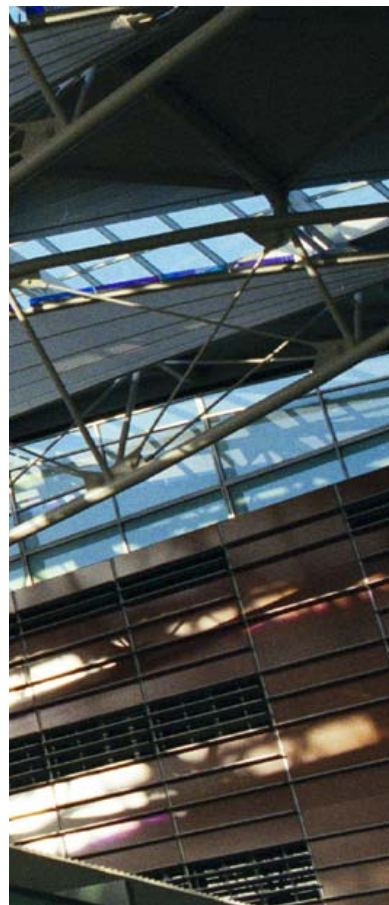
**Airfield Development Planning**

- 1. CAT I Approach .....4-13
- 2. CAT II/III Approach .....4-13
- 3. TERPS Departure Surface Analysis .....4-13
- D. Other Alternatives for Runways 19L and 19R .....4-13
  - 1. CAT I Approach .....4-13
  - 2. CAT II/III Approach .....4-13
  - 3. TERPS Departure Surface Analysis .....4-13
- X. East Flow Analysis .....4-14
  - A. Runways 10L and 10C .....4-14
- XI. North Flow Analysis .....4-14
  - A. Runways 1L and 1R .....4-14
- XII. Summary of Findings .....4-14

**Chapter 5 Airspace and Modeling Assumptions**

- I. Introduction .....5-1
- II. Description of Simmod Pro! .....5-1
- III. Simulation Event Files .....5-2
  - A. Unconstrained Demand Forecast .....5-2
  - B. Constrained Demand Forecast .....5-4
- IV. General Modeling Assumptions .....5-4
  - A. Runway Use Distribution .....5-6
    - 1. Data Used .....5-6
    - 2. Ceiling and Visibility .....5-6
    - 3. Runway Use Data .....5-6
    - 4. Runway Operating Plan/Weather Occurrence .....5-6
  - B. Runway Utilization .....5-7
    - 1. Existing Runway 1L Configuration .....5-8
    - 2. Alternatives With Extended Runway 1L .....5-8
  - C. West Plan Crosswind and Tailwind .....5-9
  - D. Aircraft Separations .....5-9
  - E. Aircraft Turn-Around Times .....5-10
  - F. Lateness/Earliness Distribution .....5-10
  - G. Gate Assignments .....5-10
  - H. Taxi Speeds .....5-10
  - I. Scope of Modeled Airspace .....5-11
- V. Specific Assumptions .....5-11
  - A. Airfield Structure .....5-12
    - 1. No-Build Alternative - 1999 .....5-12
      - a. West Plan .....5-12
      - b. All-West Plan .....5-13
      - c. Southeast Plan .....5-13
    - 2. No-Build Alternative for Future Years(2007, 2010, and 2015) .....5-13
    - 3. No-Build (Technology) Alternative .....5-13

- 4. No-Build (Demand Management) Alternative .....5-14
- 5. Alternative A-3 .....5-14
  - a. West Plan .....5-14
  - b. All-West Plan – 28L Closed .....5-14
  - c. All-West Plan – 28L Open .....5-15
  - d. Southeast Plan .....5-15
- 6. Alternative BX .....5-15
- 7. Alternative BX-2 .....5-16
- 8. Alternative BX-Refined .....5-17
- 9. Alternative F-2 .....5-18
- 10. Alternative BX-3 .....5-19
- 11. Alternative BX-4 .....5-19
- 12. Alternative BX-5 .....5-19
- 13. Alternative BX-6 .....5-19
- B. Airspace Structure .....5-20
  - 1. No-Build Alternative - 1999 .....5-20
    - a. West Plan .....5-20
      - 1) SFO – Arrival Operations .....5-20
      - 2) SFO – Departure Operations .....5-21
      - 3) OAK – Arrival Operations .....5-21
      - 4) OAK – Departure Operations .....5-21
      - 5) SJC – Arrival Operations .....5-24
      - 6) SJC – Departure Operations .....5-24
    - b. All-West Plan .....5-24
    - c. Southeast Plan .....5-24
      - 1) SFO – Arrival Operations .....5-24
      - 2) SFO – Departure Operations .....5-24
      - 3) OAK – Arrival Operations .....5-25
      - 4) OAK – Departure Operations .....5-25
      - 5) SJC – Arrival Operations .....5-25
      - 6) SJC – Departure Operations .....5-27
  - 2. No-Build Alternative for Future Years(2007, 2010, and 2015) .....5-27
    - a. West Plan .....5-27
      - 1) OAK Operations .....5-27
    - b. Southeast Plan .....5-27
      - 1) SFO Operations .....5-27
  - 3. No-Build (Technology) Alternative .....5-27
    - a. West Plan .....5-29
      - 1) SFO Operations .....5-29
      - 2) OAK Operations .....5-29
      - 3) SJC Operations .....5-29
    - b. All-West Plan .....5-29
    - c. Southeast Plan .....5-29



- 4. No-Build (Demand Management) Alternative .....5-30
- 5. Alternative A-3 .....5-30
  - a. West Plan .....5-30
  - b. All-West Plan .....5-30
  - c. Southeast Plan .....5-30
- 6. Alternative BX .....5-30
- 7. Alternative BX-2 .....5-30
- 8. Alternative BX-Refined .....5-30
  - a. West Plan .....5-30
  - b. All-West Plan .....5-31
  - c. Southeast Plan .....5-31
- 9. Alternative F-2 .....5-31
- 10. Alternative BX-3 .....5-31
- 11. Alternative BX-4 .....5-31
- 12. Alternative BX-5 .....5-31
- 13. Alternative BX-6 .....5-31
- C. Procedures .....5-31
  - 1. No-Build Alternative - 1999 .....5-32
    - a. West Plan .....5-32
    - b. All-West Plan .....5-32
    - c. Southeast Plan .....5-32
  - 2. No-Build Alternative for Future Years (2007, 2010, and 2015) .....5-33
  - 3. No-Build (Technology) Alternative .....5-33
  - 4. No-Build (Demand Management) Alternative .....5-33
  - 5. Alternative A-3 .....5-33
    - a. West Plan .....5-33
    - b. All-West Plan – 28L Closed .....5-33
    - c. All-West Plan – 28L Open .....5-34
    - d. Southeast Plan .....5-34
  - 6. Alternative BX .....5-34
  - 7. Alternative BX-2 .....5-34
  - 8. Alternative BX-Refined .....5-35
    - a. West Plan .....5-35
    - b. All-West Plan .....5-35
    - c. Southeast Plan .....5-35
  - 9. Alternative F-2 .....5-35
    - a. West Plan .....5-35
    - b. All-West Plan .....5-36
    - c. Southeast Plan .....5-36
  - 10. Alternative BX-3 .....5-36
  - 11. Alternative BX-4 .....5-36
  - 12. Alternative BX-5 .....5-36
    - a. West Plan .....5-36

- b. All-West Plan .....5-36
- c. Southeast Plan .....5-36
- 13. Alternative BX-6 .....5-36

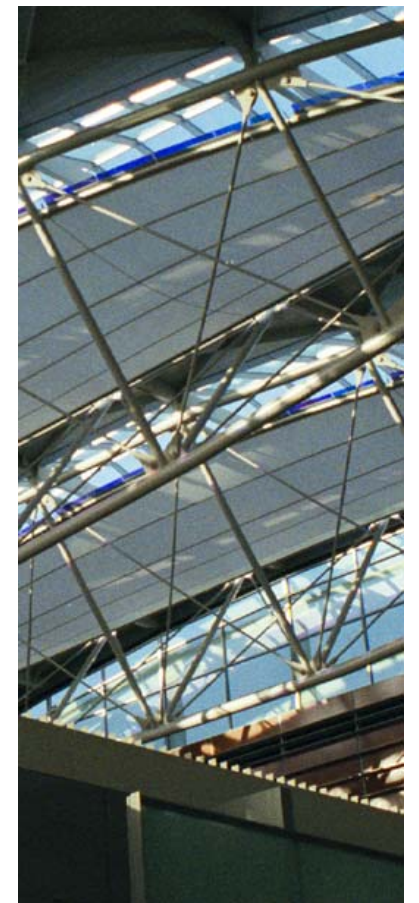
## Chapter 6 - Capacity/Delay Results

- I. Introduction ..... 6-1
- II. Delay Simulation Results ..... 6-1
  - A. Select Average Annual Delay Results ..... 6-1
  - B. No-Build Alternatives Average Annual Delay Results ..... 6-2
  - C. Build Alternatives Average Annual Delay Results ..... 6-2
  - D. BX-Refined Derivatives Average Annual Delay Results ..... 6-3
- III. Detailed Simulation Results ..... 6-4
  - A. Detailed Delay Results ..... 6-4
    - 1. West Plan ..... 6-4
      - a. West Plan - VFR ..... 6-4
      - b. West Plan - STRATUS ..... 6-5
      - c. West Plan - IFR ..... 6-5
    - 2. All-West Plan Results ..... 6-7
      - a. All-West Plan - VFR ..... 6-7
      - b. All-West Plan - STRATUS ..... 6-8
    - 3. Southeast Plan ..... 6-8
      - a. Southeast Plan - IFR ..... 6-9
  - B. Dynamic Airspace Usage ..... 6-10
  - C. Runway 28L Open/Closed Analysis ..... 6-11
  - D. West Plan Crosswind and Tailwind Analysis ..... 6-11
  - E. Departure and Arrival Flows ..... 6-11
    - 1. West Plan - VFR ..... 6-12
    - 2. West Plan – IFR ..... 6-13
    - 3. Southeast Plan – IFR ..... 6-13
    - 4. Maximum Flow Rate ..... 6-16
    - 5. Overall Maximum Flow Rate ..... 6-17
  - F. Runway Crossings ..... 6-18
  - G. Taxi Times and Distance ..... 6-20
  - H. Gate Utilization ..... 6-20
  - I. SFO/OAK Departure Interaction ..... 6-25

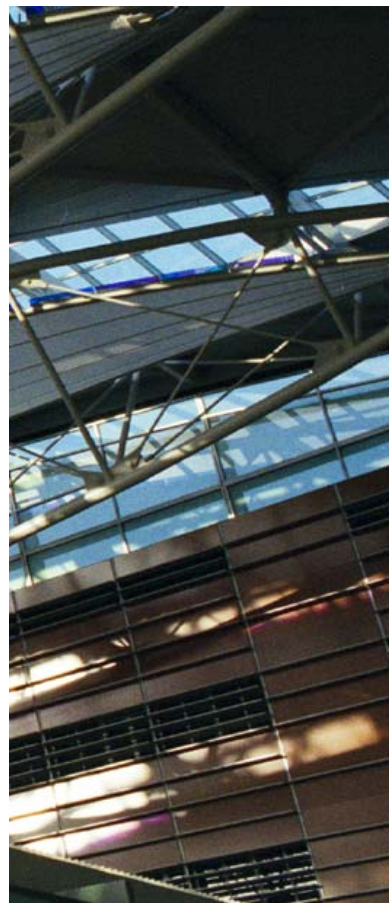
## Chapter 7 - Noise Analyses

- I. Introduction ..... 7-1
- II. Noise Analysis and Regulation ..... 7-1
  - A. Noise Fundamentals ..... 7-1
  - B. Noise Metrics ..... 7-1
  - C. Government Noise Regulations ..... 7-1

## San Francisco International Airport



**Airfield Development Planning**



- III. The Integrated Noise Model (INM) ..... 7-2
  - A. INM Overview ..... 7-2
  - B. Simmod PRO!-to-INM Data Conversion ..... 7-2
    - 1. Weather and the Average Day ..... 7-2
    - 2. Aircraft and Aircraft Substitutions ..... 7-3
    - 3. Flight Operations ..... 7-3
    - 4. Flight Tracks ..... 7-3
    - 5. Aircraft Flight Profiles ..... 7-6
  - C. Other INM Inputs ..... 7-15
    - 1. Terrain ..... 7-15
    - 2. Census Data ..... 7-15
    - 3. Grid Points ..... 7-15
    - 4. Run-Up Operations ..... 7-15
  - D. Number Above 70 dBA Calculation ..... 7-18
- IV. Noise Modeling Results ..... 7-18
  - A. CNEL Calculations ..... 7-18
    - 1. Existing Conditions (1999 No-Build) ..... 7-18
    - 2. No-Build (Technology) Alternative ..... 7-22
    - 3. No-Build (Constrained) Alternative ..... 7-22
    - 4. No-Build (Demand Management) (30 Slots per hour)Alternative ..... 7-22
    - 5. Alternative A-3 ..... 7-22
    - 6. Alternative BX-2 ..... 7-22
    - 7. Alternative BX-Refined ..... 7-22
    - 8. Alternative F-2 ..... 7-34
    - 9. Alternative BX-6 ..... 7-34
  - B. Single-Event Noise Analysis ..... 7-34

**Chapter 8 Airport Facilities**

- I. Introduction ..... 8-1
- II. Emergency Response Facilities ..... 8-1
  - A. Existing ERF Facilities ..... 8-1
  - B. ARFF Regulations ..... 8-1
  - C. Water Rescue Regulations ..... 8-3
  - D. ERF and Related Facilities Guidelines ..... 8-3
    - 1. ERF Station Location ..... 8-3
    - 2. Water Rescue Station Location ..... 8-3
    - 3. ERF Access Roads ..... 8-3
    - 4. Facility Requirements and Evaluation Criteria ..... 8-3
    - 5. ARFF Response Analysis ..... 8-3
      - a. Processing ..... 8-4
      - b. Mobilization ..... 8-4
      - c. Vehicle Performance ..... 8-4
  - E. ERF Siting Procedure ..... 8-4

- F. ERF Site Evaluation ..... 8-5
  - 1. ERF Access Routes ..... 8-5
  - 2. ERF Station Elements ..... 8-5
- G. Preliminary Recommendations ..... 8-5
- III. Potentially Affected Facilities ..... 8-5
  - A. Description of Existing Facilities ..... 8-5
    - 1. Police Training Facility ..... 8-7
    - 2. Cargo Bypass Facility ..... 8-7
    - 3. Airfield Operations Facility ..... 8-7
    - 4. AMR Combs Signature (Fixed Base Operator) Terminal Facility ..... 8-7
    - 5. Maintenance Equipment and Storage Area ..... 8-8
  - B. Relocation Analysis and Potential Sites ..... 8-8
    - 1. Site 1 ..... 8-8
    - 2. Site 2 ..... 8-8
    - 3. Site 3 ..... 8-8
    - 4. Site 4 ..... 8-9
    - 5. Site 5 ..... 8-9
    - 6. Site 6 ..... 8-9
  - C. Preliminary Recommendations ..... 8-10
- IV. Utilities ..... 8-10
  - A. Basis of Conceptual Layout and Cost Estimate ..... 8-10
    - 1. Overview of Alternatives ..... 8-10
    - 2. Construction and Sequencing Requirements ..... 8-10
    - 3. Basis for Conceptual Utility Layout ..... 8-11
    - 4. Basis of Proposed Storm Runoff Collection Areas ..... 8-11
    - 5. Basis of Cost ..... 8-11
    - 6. Existing Utility Information ..... 8-11
      - a. SFO Utility GIS ..... 8-11
      - b. Other Data Collection ..... 8-11
  - B. Assessment Approach ..... 8-12
    - 1. Definition of Subareas – Wet Utilities ..... 8-12
    - 2. Definition of Sectors – Dry Utilities ..... 8-12
  - C. Existing Utilities ..... 8-12
    - 1. Storm Drainage ..... 8-12
      - a. Primary Components of Existing Storm Drainage System ..... 8-12
      - b. Storm Drainage Operations ..... 8-12
    - 2. Industrial Waste System ..... 8-12
      - a. Primary Components of Existing Industrial Waste System ..... 8-12
      - b. Industrial Waste Operations ..... 8-12
    - 3. Potable Water ..... 8-12
      - a. Primary Components of Existing Potable Water System ..... 8-12
      - b. Potable Water Operations ..... 8-13

- 4. Sanitary Sewer .....8-13
  - a. Primary Components of Existing Sanitary Sewer System .....8-13
  - b. Sanitary Sewer Operations .....8-13
- 5. Electrical Power.....8-13
  - a. Primary Components of Existing Electrical Power System .....8-13
  - b. Electrical Power Operations .....8-14
- 6. Communication System .....8-14
  - a. Primary Components of Existing Communication System .....8-14
  - b. Communication System Operations .....8-14
- 7. Gas System .....8-15
  - a. Primary Components of Existing Gas System .....8-15
- D. Conceptual Plan for Utilities .....8-15
  - 1. Storm Drainage .....8-15
    - a. Alternative A3 .....8-15
    - b. Alternative BX .....8-15
    - c. Alternative BXR .....8-15
    - d. Alternative F2 .....8-15
  - 2. Industrial Waste .....8-15
    - a. Alternative A3 .....8-15
    - b. Alternative BX .....8-15
    - c. Alternative BXR .....8-15
    - d. Alternative F2 .....8-15
  - 3. Potable Water .....8-15
    - a. Alternative A3 .....8-16
    - b. Alternative BX .....8-16
    - c. Alternative BXR .....8-16
    - d. Alternative F2 .....8-16
  - 4. Sanitary Sewer .....8-16
    - a. Alternative A3 .....8-16
    - b. Alternative BX .....8-16
    - c. Alternative BXR .....8-16
    - d. Alternative F2 .....8-16
  - 5. Electrical Power.....8-16
    - a. Alternative A3 .....8-16
    - b. Alternative BX .....8-16
    - c. Alternative BXR .....8-16
    - d. Alternative F2 .....8-16
  - 6. Communication System .....8-16
    - a. Alternative A3 .....8-16
    - b. Alternative BX .....8-16
    - c. Alternative BXR and F2 .....8-16
  - 7. Gas System .....8-16
    - a. Alternatives A3, BX, BXR, and F2 .....8-16

- E. Conceptual Construction Cost Estimate of Utility Impacts .....8-16
- V. NavAids Requirements and Siting .....8-17
  - A. Electronic Navigation Aids .....8-17
    - 1. Types of Instrument Landing System (ILS) .....8-17
      - a. ILS Category I .....8-17
      - b. ILS Category II .....8-17
      - c. ILS Category III .....8-17
    - 2. Instrument Landing System Components .....8-17
    - 3. Localizer .....8-17
      - a. Localizer Site Criteria .....8-17
      - b. Localizer Grading Criteria .....8-18
    - 4. Glide Slope .....8-18
      - a. Equipment Shelter .....8-18
      - b. Category II Glide Slope Critical Areas .....8-18
    - 5. Marker Beacons .....8-18
      - a. Outer Marker .....8-18
      - b. Middle Marker .....8-19
      - c. Inner Marker .....8-19
    - 6. Transmissometer Facilities (RVR) .....8-19
  - B. Precision Runway Monitoring (PRM) .....8-19
  - C. Visual Navigation Aids .....8-19
    - 1. Approach Lighting Systems .....8-19
      - a. Approach Light System with Sequencer Flashers(ALSF-2) .....8-20
      - b. Medium Intensity Approach Light System (MALSR) .....8-20
        - 1) ALS Clearance Requirements .....8-20
      - c. Precision Approach Path Indicator (PAPI) .....8-20
      - d. Lighted Wind Socks/Cones .....8-20
      - e. Runway Distance Remaining Signs .....8-20
      - f. Low Level Wind shear Alert System (LLWAS) .....8-20
- VI. ATCT Siting Report .....8-21

**Appendix A Abbreviations and Acronyms**

- A/C thru ATIS ..... A-1
- ATISR thru DEA ..... A-2
- DEDS thru FSTS ..... A-3
- FSYS thru MCC ..... A-4
- MCL thru PAM ..... A-5
- PAPI thru SMPS ..... A-6
- SMS thru VTAC ..... A-7
- VTOL thru Z A-8

**Appendix B Airport Codes and Cities**

- Domestic A thru L ..... B-1

**San Francisco International Airport**



Domestic M thru International C ..... B-2  
International C thru Y ..... B-3  
International Y thru Z ..... B-4

**Appendix C Detailed Forecasts**

(See List of Tables)

**Appendix D Detailed Demand Management Forecast**

(See List of Tables)

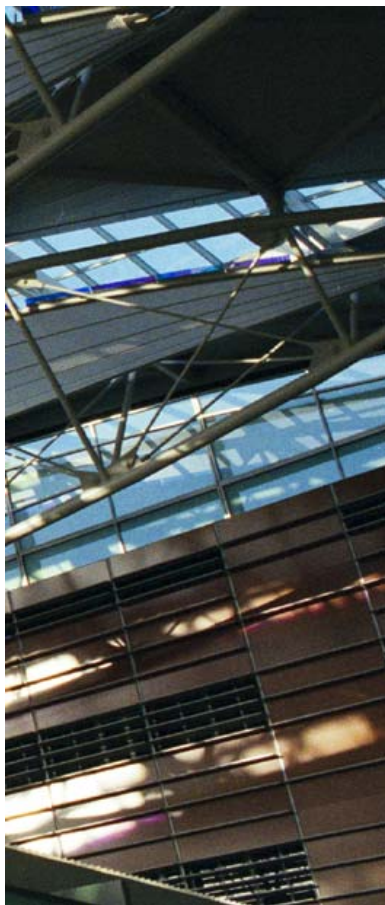
**Appendix E Additional Noise Analyses**

(See List of Figures)

**Appendix F ATCT Siting Report**

**Appendix G FAA Letters**

October 12, 1999 — To Matthew Mead, From Harvey Riebel ..... G-1 thru G-2  
March 30, 2000 – To Matthew Mead, From Joseph Rodriguez ..... G-2 thru G-3  
April 20, 2000 – To Joseph Rodriguez, From Matthew Mead ..... G-4  
May 28, 2000—To Matthew Mead, From Joseph Rodriguez ..... G-4 thru G-5  
May 25, 2000 – To Matthew Mead, from Joseph Rodriguez ..... G-5  
November 20, 2001 – To Matthew Mead, From Joseph Rodriguez with Attachment .. G-6 thru G-8  
June 9, 2000 – To Joe Rodriguez, From Matthew Mead ..... G-8  
June 26, 2000 – To Matthew Mead, From Joseph Rodriguez ..... G-9  
August 24, 2000 – To Stuart Sunshine, From Dan Morse ..... G-10  
Notice of Landing Area Proposal ..... G-10  
November 10, 2000, From Matthew Mead, To Joseph Rodriguez ..... G-11  
October 26, 2000, To Matthew Mead, From Andrew Richards ..... G-11 thru G-13  
January 23, 2001, To Matthew Mead, From Joseph Rodriguez ..... G-14  
February 9, 2001, To Camille Garibaldi, From Matthew Mead ..... G-15  
April 3, 2001, To Dan Blythe, From Matthew Mead ..... G-16  
February 26, 2001, To Matthew Mead, From Joseph Rodriguez ..... G-17  
May 7, 2001, To Matthew Mead, From Joseph Rodriguez with Enclosures ..... G-17 thru G-20  
May 10, 2001, To Matthew Mead, From Mark Sherry ..... G-20 thru G-22  
May 11, 2001, To Matthew Mead, From Joseph Rodriguez with Enclosures ..... G-23 thru G-25  
May 15, 2001, To Manager, Airspace Branch, From Andrew Richards ..... G-26  
May 10, 2001, To Manager, Air Traffic Division, From Walter Smith ..... G-27  
June 7, 2001, To Matthew Mead, From Joseph Rodriguez ..... G-28 thru G-29  
June 10, 2001, To Matthew Mead, From Joseph Rodriguez ..... G-29 thru G-30  
January 10, 2002, To Stuart Sunshine, From Dan Morse ..... G-30 thru G-31



## Chapter 1 Executive Summary

1-1	Alternative A-3	1-3
1-2	Alternative BX	1-3
1-3	Alternative BX-2	1-3
1-4	Alternative BX-R	1-3
1-5	Alternative F-2	1-4
1-6	Alternative JR	1-4
1-7	Alternative BX-3	1-5
1-8	Alternative BX-4	1-5
1-9	Alternative BX-5	1-5
1-10	Alternative BX-6	1-5
1-11	Alternative A-3R	1-6
1-12	Modeled Airpace	1-6
1-13	2015 65 dBA CNEL Contours	1-12
1-14	Grid Point Locations	1-15

## Chapter 2 Activity Forecasts

2-1	Total Annual SFO Passenger Projections Unconstrained Versus Constrained	2-86
2-3	Fleet Composition – No-Build	2-88
2-4	Fleet Composition – No-Build SOIA	2-88
2-5	Market-By-Market	2-99
2-6	2015 with 30 Arrivals Daily Demand Schedule	2-102
2-7	2015 with 34 Arrivals Daily Demand Schedule	2-102
2-8	2015 with 38 Arrivals Daily Demand Schedule	2-102

## Chapter 3 Dimensional Requirements and Alternative Layouts

3-1	All Weather Wind Rose for SFO	3-3
3-2	Obstacle Free Zone	3-8
3-3	Clearway	3-8
3-4	Stopway	3-9
3-5	Right-Angle Exit Taxiway	3-9
3-6	45-Degree Angle Exit Taxiway	3-10
3-7	30-Degree Acute Angle Exit Taxiway	3-10
3-9	Radii of Curvature and Entrance Curves for Taxiways	3-10
3-8	Entrance Taxiway	3-10
3-9	Bypass Taxiway	3-11
3-10	Taxiway Fillets	3-11
3-11	Runway Gradient Standards	3-12
3-12	RSA Longitudinal Grade	3-12
3-13	RSA Transverse Grade	3-12
3-14	Runway Reconfiguration Alternatives	3-15
3-15	SFO's Existing Airfield Layout	3-17
3-16	TERPS – Group V	3-19

3-17	TERPS – Group VI	3-19
3-18	RNAV – Group V	3-19
3-19	RNAV – Group VI	3-19
3-20	Declared Distances – No Additional Length	3-20
3-21	Declared Distances – Full Use of Existing Pavement	3-20
3-22	Platform Width Scenarios	3-21
3-23	Platform Width Scenarios	3-22
3-24	Alternative A3	3-25
3-25	Alternative BX	3-26
3-26	Alternative BX-2	3-27
3-27	Alternative BX-Refined	3-28
3-28	Alternative F2	3-29
3-29	Alternative J Refined	3-31
3-30	Alternative BX-3	3-32
3-31	Alternative BX-4	3-33
3-32	Alternative BX-5	3-34
3-33	Alternative BX-6	3-35
3-34	Alternative A-3 Refined	3-37
3-35	NLA Taxi Flow (West and All-West Plans)	3-38
3-36	NLA Taxi Flow (Southeast Plan)	3-38
3-37	Taxiway Improvements Needed to Accommodate the A-380	3-39

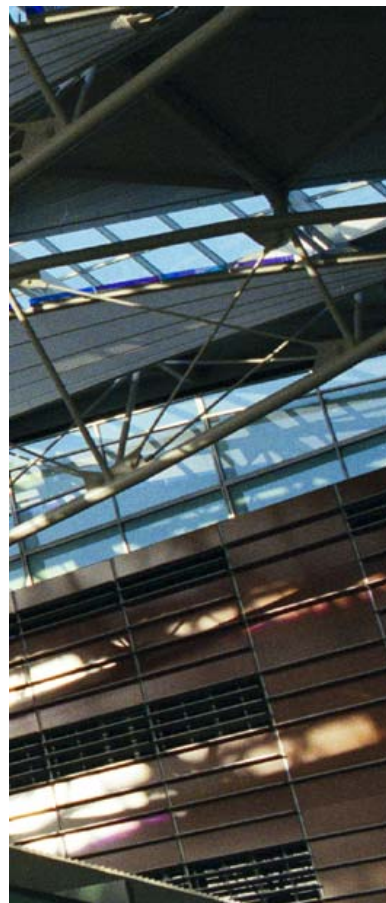
## Chapter 4 Obstructions and TERPS Analyses

4-1	FAR Part 77 Imaginary Surfaces	4-1
4-2	Alternative A-3 Airport Airspace Plan	4-4
4-3	Alternative BX Airport Airspace Plan	4-5
4-5	Alternative BX-2 Airport Airspace Plan	4-6
4-6	Alternative BX Refined Airport Airspace Plan	4-7
4-7	Alternative F2 Airport Airspace Plan	4-8
4-7	Runways 28R and 28C WAAS Final Approach Segment	4-15
4-8	Runway 28R WAAS Straight Missed Approach Area and Runway 28C WAAS 45-Degree Turning Missed Approach Area	4-16
4-9	Runway 28R WAAS 60 Degrees Turning Missed Approach Area	4-17
4-10	Runway 28R Simultaneous ILS Turning Missed Approach Area	4-18
4-11	Runway 28R and 28C CAT I Missed Approach Early Breakout	4-19
4-12	Runway 28R CAT III Missed Approach-129 Degrees Fly-By Fix	4-20
4-13	Runway 28R CAT II/III ILS 90 Degrees Turning Missed Approach Area	4-21
4-14	Runway 28R and 28C CAT II/III Missed Approach Early Breakout	4-22
4-15	Runway 28R WAAS Departure 110 Degrees Turn Fly-Over Fix	4-23
4-16	Runway 28R WAAS Departure Straight-Out Fly-Over Fix	4-24
4-17	Runway 28R and 28C WAAS Final Approach Segment	4-25
4-18	Runway 28R WAAS Straight Missed Approach Area and Runway 28C WAAS	

## San Francisco International Airport



**Airfield  
Development  
Planning**



45 Degrees Turning Missed Approach Area.....	4-26
4-19 Runway 28R WAAS 60 Degrees Turning Missed Approach Area .....	4-27
4-20 Runway 28R Simultaneous ILS Turning Missed Approach Area .....	4-28
4-21 Runway 28R and 28C CAT I Missed Approach Early Breakout .....	4-29
4-22 Runway 28R CAT III Missed Approach – 129 Degrees Fly-By Fix .....	4-30
4-23 Runway 28R CAT II/III ILS 90 Degrees Turning Missed Approach Area .....	4-31
4-24 Runway 28R and 28C CAT II/III Missed Approach Early Breakout.....	4-32
4-25 Runway 28R WAAS Departure 110 Degrees Turn Fly-Over Fix.....	4-33
4-26 Runway 28R WAAS Straight Departure Fly-Over Fix .....	4-34
4-27 Runway 28C WAAS Straight Missed Approach .....	4-35
4-28 Runway 28C WAAS Departure Straight-Out Fly-Over Fix .....	4-36
4-29 Runway 28C WAAS Departure 30 Fly-By Fix.....	4-37
4-30 Runway 28L WAAS Straight Departure Fly-Over Fix .....	4-38
4-31 Runway 28L WAAS Departure 30 Degrees Fly-By Fix .....	4-39
4-32 Runway 19R and 19L WAAS Final Approach Segment .....	4-40
4-33 Runway 19R and 19L WAAS 90 Degrees Turning Missed Approach Area Fly-Over Fix 4-41	
4-34 Runway 19R CAT I ILS 60 Degrees Turning Missed Approach Area.....	4-42
4-35 Runway 19R and 19L WAAS CAT I Missed Approach Early Breakout .....	4-43
4-36 Runway 19R Early Breakout (CAT I) – 660 Degrees .....	4-44
4-37 Runway 19R WAAS Departure 90 Degrees Left Turning Fly-Over Fix .....	4-45
4-38 Runway 19R WAAS Departure 90 Degrees Right Turning Fly-Over Fix .....	4-46
4-39 Runway 19 WAAS 30 Degrees Right Turning and Runway 21 WAAS – 30 Degrees Left Turning Missed Approach Fly-By Fix .....	4-47
4-40 Runway 19 WAAS 35 Degrees Right Turning and Runway 21 WAAS 30 Degrees Left Turning Missed Approach Fly-By Fix .....	4-48
4-41 Runway 19 WAAS 30 Degrees Right Turning Missed Approach Fly-By Fix and Runway 21 WAAS 90 Degrees Left Turning Missed Approach Fly-Over Fix .....	4-49
4-42 Runway 19 WAAS 35 Degrees Right Turning Missed Approach Fly-By Fix and Runway 21 WAAS 90 Degrees Left Turning Missed Approach Fly-Over Fix .....	4-50
4-43 Runway 19 40 Degrees Right Turning WAAS Missed Approach Fly-By Fix And Runway 21 90 Degrees Left Turning Missed Approach Fly-Over Fix .....	4-51
4-44 Runway 19 45 Degrees Right Turning WAAS Missed Approach Fly-By Fix And Runway 21 90 Left Turning WAAS Missed Approach Fly-Over Fix.....	4-52
4-45 Runway 19 90 Degrees Right Turning WAAS and Runway 21 90 Degrees Left Turning WAAS Missed Approach Fly-Over Fix .....	4-53
4-46 Runway 19L CAT III Missed Approach 129 Degrees Fly-By Fix .....	4-54
4-47 Runway 19L WAAS Departure 90 Degrees Left Turning Fly-Over Fix .....	4-55
4-48 Runway 19L and 19R WAAS Missed Approach 90 Degrees Fly-By Fix .....	4-56
4-49 Runway 19L and 19R WAAS Missed Approach 90 Degrees Fly-Over Fix.....	4-57
4-50 Runway 19L Straight Ahead Fly-Over Fix and Runway 19R 45 Degrees Right Turning Fly-By Fix .....	4-58
4-51 Runway 19R WAAS Departure 90 Degrees Left Turning Fly-Over Fix .....	4-59

4-52 Runway 19L WAAS Departure 90 Degrees Left Turning Fly-Over Fix .....	4-60
4-53 Runway 10C and 10I WAAS Final Approach Segment.....	4-61
4-54 Runway 10C and 10R WAAS CAT I Missed Approach Early Breakout .....	4-62
4-55 Runway 1L WAAS Final Approach Segment.....	4-63
4-56 Runway 1R WAAS Final Approach Segment .....	4-64

**Chapter 5 Airspace and Modeling Assumptions**

5-1 Modeled Airspace .....	5-1
5-2 SFO 1999 Daily Demand Schedule .....	5-2
5-3 OAK 1999 Daily Demand Schedule .....	5-2
5-4 SJC 1999 Daily Demand Schedule .....	5-2
5-5 SFO 2007 Daily Demand Schedule .....	5-3
5-6 OAK 2007 Daily Demand Schedule .....	5-3
5-7 SJC 2007 Daily Demand Schedule .....	5-3
5-8 SFO 2010 Daily Demand Schedule .....	5-3
5-9 OAK 2010 Daily Demand Schedule .....	5-3
5-10 SJC 2010 Daily Demand Schedule .....	5-3
5-11 SFO 2015 Daily Demand Schedule .....	5-3
5-12 OAK 2015 Daily Demand Schedule .....	5-3
5-13 SJC 2015 Daily Demand Schedule .....	5-3
5-14 2007 Constrained Daily Demand Schedule .....	5-4
5-15 2010 Constrained Daily Demand Schedule .....	5-4
5-16 2015 Constrained Daily Demand Schedule .....	5-4
5-17 2007 with 30 Arrivals Daily Demand Schedule .....	5-5
5-18 2015 with 30 Arrivals Daily Demand Schedule .....	5-5
5-19 2007 with 34 Arrivals Daily Demand Schedule .....	5-5
5-20 2015 with 34 Arrivals Daily Demand Schedule .....	5-5
5-21 2007 with 38 Arrivals Daily Demand Schedule .....	5-5
5-22 2015 with 38 Arrivals Daily Demand Schedule .....	5-5
5-23 Lateness/Earliness Cumulative Distribution.....	5-11
5-24 Airspace Area Modeled.....	5-11
5-25 No-Build West Plan Taxi Paths .....	5-12
5-26 No-Build Simulation Airfield Link-Node Structure .....	5-12
5-27 OAK 1999 Simulation Airfield Link-Node Structure .....	5-12
5-28 SJC 1999 Simulation Airfield Link-Node Structure .....	5-13
5-29 SFO 1999 All-West Plan Taxi Paths .....	5-13
5-30 SFO 1999 Southeast Plan Taxi Paths .....	5-13
5-31 SFO 2007 No-Build Simulation Airfield Link-Node Structure .....	5-14
5-32 SJC 2007 No-Build Simulation Airfield Link-Node Structure .....	5-14
5-33 SFO A-3 West Plan Taxi Paths .....	5-14
5-34 SFO A-3 Simulation Airfield Link-Node Structure.....	5-14
5-35 SFO A-3 All-West Plan (28L Closed) Taxi Paths .....	5-15
5-36 SFO A-3 All-West Plan (28L Open) Taxi Paths .....	5-15

5-37	SFO A-3 Southeast Plan Taxi Paths	5-15
5-38	SFO BX West Plan Taxi Paths	5-15
5-39	SFO BX Refined Simulation Airfield Link-Node Structure	5-15
5-40	SFO BX All-West Plan (28L Closed) Taxi Paths	5-16
5-41	SFO BX All-West Plan (28L Open) Taxi Paths	5-16
5-42	SFO BX Southeast Plan Taxi Paths	5-16
5-43	SFO BX-2 West Plan Taxi Paths	5-16
5-44	SFO BX-2 Simulation Airfield Link-Node Structure	5-16
5-45	SFO BX-2 All-West Plan (28L Closed) Taxi Paths	5-17
5-46	SFO BX-2 All-West Plan (28L Open) Taxi Paths	5-17
5-47	SFO BX-2 Southeast Plan Taxi Paths	5-17
5-48	SFO BX-Refined West Plan Taxi Paths	5-17
5-49	SFO BX-Refined Airfield Simulation Link-Node Structure	5-17
5-50	SFO BX-Refined All-West Plan (28L Closed) Taxi Paths	5-18
5-51	SFO BX-Refined All-West Plan (28L Open) Taxi Paths	5-18
5-52	SFO BX-Refined Southeast Plan Taxi Paths	5-18
5-53	SFO F-2 West Plan Taxi Paths	5-18
5-54	SFO F-2 Simulation Airfield Link-Node Structure	5-18
5-55	SFO F-2 All-West Plan (28L Closed) Taxi Paths	5-19
5-56	SFO F-2 All-West Plan (28L Open) Taxi Paths	5-19
5-57	SFO F-2 Southeast Plan Taxi Paths	5-19
5-58	SFO West Plan Arrival Routes	5-20
5-59	SFO West Plan Departure Routes	5-21
5-60	OAK West Plan Arrival Routes	5-22
5-61	OAK West Plan Departure Routes	5-22
5-62	SJC West Plan Arrival Routes	5-22
5-63	SJC West Plan Departure Routes	5-23
5-64	SFO Southeast Plan Arrival Routes	5-23
5-65	SFO Southeast Plan Departure Routes	5-25
5-66	OAK Southeast Plan Arrival Routes	5-26
5-67	OAK Southeast Plan Departure Routes	5-26
5-68	SJC Southeast Plan Arrival Routes	5-27
5-69	SJC Southeast Plan Departure Routes	5-28
5-70	OAK Marvis STAR	5-28
5-71	SFO SOIA Routes Compared to Existing Radar Tracks	5-29
5-72	SFO BX-Refined Southeast Plan Airspace Structure	5-31

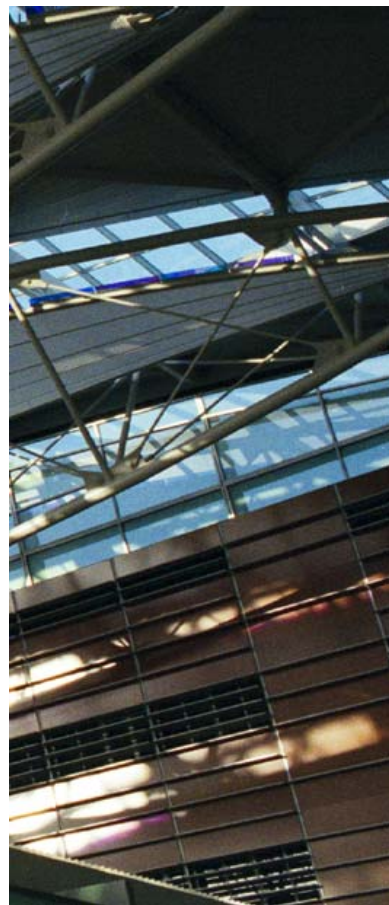
## Chapter 6 Capacity/Delay Results

6-1	Arrival Flow – No-Build (Technology), West Plan, VFR, 2015	6-12
6-2	Arrival Flow – Alternative A-3, West Plan, VFR, 2015	6-12
6-3	Arrival Flow – Alternative BX, West Plan, VFR, 2015	6-12
6-4	Arrival Flow – Alternative BX-2, West Plan, VFR, 2015	6-12
6-5	Arrival Flow – Alternative BX-Refined, West Plan, VFR, 2015	6-12

6-6	Arrival Flow – Alternative F-2, West Plan, VFR, 2015	6-12
6-7	Departure Flow – No-Build (Technology), West Plan, VFR, 2015	6-13
6-8	Departure Flow – Alternative A-3, West Plan, VFR, 2015	6-13
6-9	Departure Flow – Alternative BX, West Plan, VFR, 2015	6-13
6-10	Departure Flow – Alternative BX-2, West Plan, VFR, 2015	6-13
6-11	Departure Flow – Alternative BX-Refined, West Plan, VFR, 2015	6-13
6-12	Departure Flow – Alternative F-2, West Plan, VFR, 2015	6-13
6-13	Arrival Flow – No-Build (Technology), West Plan, IFR, 2015	6-14
6-14	Arrival Flow – Alternative A-3, West Plan, IFR, 2015	6-14
6-15	Arrival Flow – Alternative BX, West Plan, IFR, 2015	6-14
6-16	Arrival Flow – Alternative BX-2, West Plan, IFR, 2015	6-14
6-17	Arrival Flow – Alternative BX-Refined, West Plan, IFR, 2015	6-14
6-18	Arrival Flow – Alternative F-2, West Plan, IFR, 2015	6-14
6-19	Departure Flow – No-Build (Technology), West Plan, IFR, 2015	6-14
6-20	Departure Flow – Alternative A-3, West Plan, IFR, 2015	6-14
6-21	Departure Flow – Alternative BX, West Plan, IFR, 2015	6-14
6-22	Departure Flow – Alternative BX-2, West Plan, IFR, 2015	6-15
6-23	Departure Flow – Alternative BX-Refined, West Plan, IFR, 2015	6-15
6-24	Departure Flow – Alternative F-2, West Plan, IFR, 2015	6-15
6-25	Arrival Flow – No-Build (Technology), Southeast Plan, IFR, 2015	6-15
6-26	Arrival Flow – Alternative A-3, Southeast Plan, IFR, 2015	6-15
6-27	Arrival Flow – Alternative BX, Southeast Plan, IFR, 2015	6-15
6-28	Arrival Flow – Alternative BX-2, Southeast Plan, IFR, 2015	6-15
6-29	Arrival Flow – Alternative BX-Refined, Southeast Plan, IFR, 2015	6-15
6-30	Arrival Flow – Alternative F-2, Southeast Plan, IFR, 2015	6-15
6-31	Departure Flow – No-Build, (Technology), Southeast Plan, IFR, 2015	6-16
6-32	Departure Flow – Alternative A-3, Southeast Plan, IFR, 2015	6-16
6-33	Departure Flow – Alternative BX, Southeast Plan, IFR, 2015	6-16
6-34	Departure Flow – Alternative BX-2, Southeast Plan, IFR, 2015	6-16
6-35	Departure Flow – Alternative BX-Refined, Southeast Plan, IFR, 2105	6-16
6-36	Departure Flow – Alternative F-2, Southeast Plan, IFR, 2015	6-16
6-37	Runway Crossing Example (a)	6-18
6-38	Runway Crossing Example (b)	6-18
6-39	Runway Crossing Occurrences – West Plan-2015	6-19
6-40	No-Build West Plan Runway Crossings-2015	6-19
6-41	BX-Refined West Plan Runway Crossings-2015	6-19
6-42	A-3 West Plan Runway Crossings-2015	6-19
6-43	F-2 West Plan Runway Crossings-2015	6-29
6-44	BX West Plan Runway Crossings-2015	6-19
6-45	BX-2 West Plan Runway Crossings-2015	6-20
6-46	West Plan Taxi-in Times from Runway 28R (minutes)	6-21
6-47	West Plan Taxi-in Distance from Runway 28R (nautical miles)	6-21
6-48	West Plan Taxi-in Times from Runway 28L or Runway 28C (minutes)	6-21

## San Francisco International Airport





6-49	West Plan Taxi-in Distance from Runway 28L or 28C (nautical miles)	6-21
6-50	West Plan Taxi-out Times to Runway 1L (minutes)	6-22
6-51	West Plan Taxi-out Distance to Runway 1L (nautical miles)	6-22
6-52	West Plan Taxi-out Times to Runway 1R (minutes)	6-22
6-53	West Plan Taxi-out Distance to Runway 1R (nautical miles)	6-22
6-54	West Plan Taxi-out Times to Runway 28R or Runway 28C (minutes)	6-23
6-55	West Plan Taxi-out Distance to Runway 28R or 28C (nautical miles)	6-23
6-56	Gate Allocation	6-24
6-57	Available RON Parking Positions	6-24
6-58	Potential Additional Gates	6-25
6-59	SFO Boarding Areas A through G Utilization – 2015	6-26
6-60	Reassigned Heavy Jet Runway 1L Departures	6-26
6-61	OAK Ground Hold Occurrences-2015	6-26
6-62	OAK Ground Hold Cause-2015	6-26

**Chapter 7 Noise Analyses**

7-1	SFO Arrival and Departure Flight Tracks	7-7
7-2	SFO Arrival and Departure Flight Tracks	7-8
7-3	SFO Arrival and Departure Flight Tracks	7-9
7-4	SFO Arrival and Departure Flight Tracks	7-10
7-5	SFO Arrival and Departure Flight Tracks	7-11
7-6	SFO Arrival and Departure Flight Tracks	7-12
7-7	SFO Arrival and Departure Flight Tracks	7-13
7-8	OAK Arrival and Departure Flight Tracks	7-14
7-9	SJC Arrival and Departure Flight Tracks	7-14
7-10	Terrain Contours Used for the INM	7-15
7-11	Population Blocks	7-16
7-12	Grid Point Locations	7-17
7-13	1999 No-Build CNEL Contours	7-21
7-14a	2007 No-Build (PRM/SOIA) CNEL Contours	7-23
7-14b	2015 No-Build (PRM/SOIA) CNEL Contours	7-24
7-15	2015 No-Build (Constrained) CNEL Contours	7-25
7-16a	2007 No-Build (Demand Management) CNEL Contours	7-26
7-16b	2015 No-Build (Demand Management) CNEL Contours	7-27
7-17a	2007 Alternative A-3 CNEL Contours	7-28
7-17b	2015 Alternative A-3 CNEL Contours	7-29
7-18a	2007 Alternative BX-2 CNEL Contours	7-30
7-18b	2015 Alternative BX-2 CNEL Contours	7-31
7-19a	2007 Alternative BX-Refined CNEL Contours	7-32
7-19b	2015 Alternative BX-Refined CNEL Contours	7-33
7-20a	2007 Alternative F-2 CNEL Contours	7-35
7-20b	2015 Alternative F-2 CNEL Contours	7-36
7-21a	2007 Alternative BX-6 CNEL Contours	7-37

7-21b	2015 Alternative BX-6 CNEL Contours	7-38
-------	-------------------------------------	------

**Chapter 8 Airport Facilities**

8-1	ERF Locations	
8-2		
8-2	Proposed Supplemental ERF Site	8-4
8-3	Proposed Supplemental ERF Site for Alternative F-2	8-4
8-4	Potentially Affected Facilities	8-6
8-5	Potential Relocation Sites	8-9
8-6	Area Plan for Wet Utilities	8-13
8-7	Sector Plan for Dry Utilities	8-14
8-8	ILS Components	8-17
8-9	Localizer Critical Area	8-18
8-10	Glide Slope Siting Criteria	8-18
8-11	Glide Slope Critical Areas	8-18
8-12	Marker Beacons	8-19

**Appendix A Abbreviations and Acronyms**

(None)

**Appendix B Airport Codes and Cities**

(None)

**Appendix C Detailed Forecasts**

(None)

**Appendix D Detailed Demand Management Forecast**

**Appendix E Additional Noise Analyses**

E-1	2007 No-Build CNEL Contours	E-1
E-2	2015 No-Build CNEL Contours	E-2
E-3	2007 No-Build (Technology) Contours	E-3
E-4	2015 No-Build (Technology) Contours	E-4
E-5	2007 Alternative A-3 CNEL Contours	E-5
E-6	2015 Alternative A-3 CNEL Contours	E-6
E-7	2007 Alternative BX CNEL Contours	E-7
E-8	2015 Alternative BX CNEL Contours	E-8
E-9	2007 Alternative BX-2 CNEL Contours	E-9
E-10	2015 Alternative BX-2 CNEL Contours	E-10
E-11	2007 Alternative BX-Refined CNEL Contours	E-11
E-12	2015 Alternative BX-Refined CNEL Contours	E-12
E-13	2007 Alternative F-2 CNEL Contours	E-13



E-14 2015 Alternative F-2 CNEL Contours ..... E-14  
 E-15 2015 Alternative BX-3 (Crosswind) CNEL Contours ..... E-15  
 E-16 2015 Alternative BX-4 (Crosswind) CNEL Contours ..... E-16

**Appendix F ATCT Siting Report**

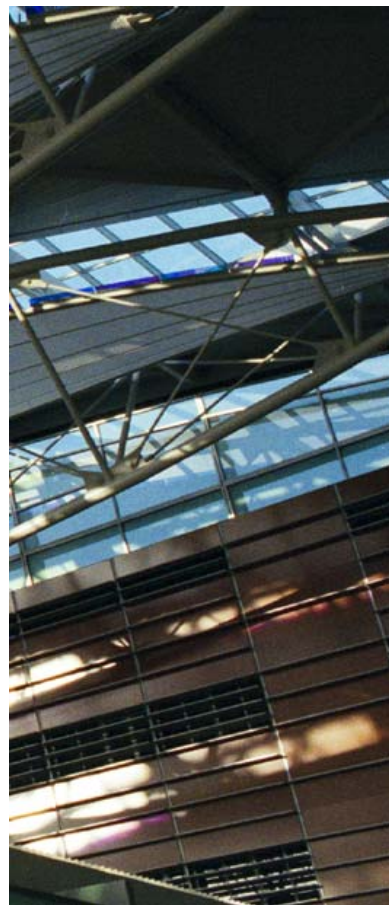
1 Potential ATCT Sites ..... F-5  
 2 Areas Outside FAR Part 77 Transitional Surfaces ..... F-6  
 B-1 Shadow Diagram ATCT Site 1 ..... F-22  
 B-2 Shadow Diagram ATCT Site 1A ..... F-23  
 B-3 Shadow Diagram ATCT Site 2 ..... F-24  
 B-4 Shadow Diagram ATCT Site 3 ..... F-25  
 B-5 Shadow Diagram ATCT Site 4 ..... F-26  
 B-6 Shadow Diagram ATCT Site 4 ..... F-27  
 C-1 Panoramic View from Site 1 ..... F-29  
 C-2 Panoramic View from Site 1A ..... F-30  
 C-3 Panoramic View from Site 2 ..... F-31  
 C-4 Panoramic View from Site 3 ..... F-32  
 C-5 Panoramic View from Site 3A ..... F-33

**Appendix G FAA Letters**

(None)

**San Francisco  
 International  
 Airport**





**Chapter 1 Executive Summary**

1-1	SFO Average Peak Month Daily Operations .....	1-1
1-2	Daily Operations for Modeled Demand Years .....	1-7
1-3	SFO Daily Operations (Constrained Demand) .....	1-7
1-4	SFO Daily Operations (Demand Management Alternatives) .....	1-7
1-5	Summary of SFO Runway Operating Alternatives .....	1-7
1-6	Existing Conditions Weather Percentage Distribution .....	1-8
1-7	No-build (Technology) Alternatives Weather Percentage Distribution .....	1-8
1-8	Build Alternatives Weather Percentage Distribution .....	1-8
1-9	Departure Runway Utilization .....	1-8
1-10	Departure Runway Assignment .....	1-8
1-11	Average Annual Delay .....	1-9
1-12	2000 Population within 2015 CNEL Contours .....	1-11
1-13	Number of Aircraft Events Above 70 dBA at Gridpoints .....	1-13
1-14	TERPS Surface Analysis .....	1-16
1-15	Evaluation Matrix .....	1-17

**Chapter 2 Activity Forecasts**

2-1	Historical Regional Population .....	2-1
2-2	Historical Regional Employment .....	2-1
2-3	Historical Regional Income .....	2-1
2-4	Historical Domestic Origin-Destination Passengers .....	2-2
2-5	Historical Yield Airline Revenue Per Passenger Mile (in 1998 cents) .....	2-2
2-6	Historical Passenger Enplanements .....	2-2 thru 2-3
2-7	Historical Air Cargo Volumes .....	2-3
2-8	Historical Aircraft Operations .....	2-4
2-9	Base Year 1998 Activity Profile: Passengers .....	2-5
2-10	Base Year 1998 Activity Profile: Aircraft Operations .....	2-5
2-11	Domestic Passenger Forecast Market Categories .....	2-8
2-12	Domestic Originations Forecast Regression Equations (A) .....	2-10 thru 2-14
2-13	Summary Of Domestic Origin-Destination Forecasts .....	2-15 thru 2-16
2-14	Summary Of Domestic Outbound Passenger Forecasts .....	2-18 thru 2-19
2-15	Summary Of Domestic Seat Departure Forecast .....	2-21 thru 2-22
2-16	Summary Of Seat Departure, Outbound Passenger, And Aircraft Operation Forecasts By Market And Airport: 1998 .....	2-24 thru 2-25
2-17	Summary Of Seat Departure, Outbound Passenger, And Aircraft Operation Forecasts By Market And Airport: 2007 .....	2-26 thru 2-29
2-18	Summary Of Seat Departure, Outbound Passenger, And Aircraft Operation Forecasts By Market And Airport: 2010 .....	2-30 thru 2-33
2-19	Summary Of Seat Departure, Outbound Passenger, And Aircraft Operation Forecasts By Market And Airport: 2015 .....	2-34 thru 2-37
2-20	Summary Of Seat Departure, Outbound Passenger, And Aircraft Operation Forecasts By Market And Airport: 2015 .....	2-38 thru 2-41

2-21	Summary Of Domestic Passenger Projections .....	2-42
2-22	Domestic Fleet Mix .....	2-43 thru 2-44
2-23	Summary of Non-Scheduled Passenger Activity Forecasts .....	2-45
2-24	Projected U.S. International Passenger Growth By Region .....	2-45
2-25	Historical U.S. and Bay Area International Passengers .....	2-47
2-26	Projected U.S. and Bay Area International Passengers .....	2-48
2-27	Projected Bay Area International Passengers by Market Prior to Adjustment for New Markets and Constraints at Destination Airports .....	2-49
2-28	LAX International Scheduled Service Experience and Potential New International Bay Area Non-Stop Markets .....	2-50 thru 2-52
2-29	Projected Bay Area International Passengers by Market After Adjustment for New Markets and Constraints at Destination Airports .....	2-53
2-30	Summary of International Passengers and Scheduled Aircraft Departures by Airport San Francisco International Airport .....	2-54
2-31	Summary of International Passengers and Scheduled Aircraft Departures by Airport Oakland International Airport .....	2-55
2-32	Summary of International Passengers and Scheduled Aircraft Departures by Airport San Jose International Airport .....	2-56
2-33	Summary of International Passengers and Scheduled Aircraft Departures by Airport Total .....	2-57
2-34	Summary of International Passengers by Airport .....	2-58
2-35	Summary of International Aircraft Departures by Airport .....	2-58
2-36	Summary of International Passenger Projections .....	2-59
2-37	International Aircraft Departures by Aircraft Type .....	2-60
2-38	Forecast of Air Cargo Volumes (Tons) .....	2-62
2-39	SFO Air Freight Forecast .....	2-62
2-40	OAK Air Freight Forecast .....	2-63
2-41	SJC Air Freight Forecast .....	2-64
2-42	Projection of SFO Freighter Operations .....	2-64
2-43	Projection of OAK Freighter Operations .....	2-64
2-44	Projection of SJC Freighter Operations .....	2-64
2-45	Air Freight Forecast Summary .....	2-64
2-46	Air Cargo Operations Forecast .....	2-65
2-47	Freighter Fleet Mix .....	2-65 thru 2-66
2-48	1999 Air Taxi and Light Cargo Operations .....	2-66
2-49	Air Taxi Annual Operations Forecast .....	2-67
2-50	Air Taxi Peak Month Operations Forecast .....	2-67
2-51	Air Taxi Peak Month Average Day Operations Forecast .....	2-67
2-52	Air Taxi Average Annual Day Operations Forecast .....	2-67
2-53	1999 General Aviation and Military Operations .....	2-68
2-54	General Aviation Annual Operations Forecast .....	2-68
2-55	General Aviation Peak Month Operations Forecast .....	2-69
2-56	General Aviation Peak Month Average Day Operations Forecast .....	2-69

2-57	General Aviation Average Annual Day Operations Forecast .....	2-69
2-58	Military Operations Forecast .....	2-69
2-59	Summary of Passenger Projections .....	2-70
2-60	Summary of Annual Operations Projections .....	2-71
2-61	Average Day Peak Month Operations: 2007 .....	2-72
2-62	Average Day Peak Month Operations: 2010 .....	2-72
2-63	Average Day Peak Month Operations: 2015 .....	2-73
2-64	Average Day Peak Month Operations: 2020 .....	2-73
2-65	Average Annual Day Operations: 2007 .....	2-74
2-66	Average Annual Day Operations: 2010 .....	2-74
2-67	Average Annual Day Operations: 2015 .....	2-74
2-68	Average Annual Day Operations: 2020 .....	2-74
2-69	Estimated SFO Capacity at 20 Minutes of Delay .....	2-76
2-70	Preliminary Constrained Operations Forecast Average Annual Day .....	2-77
2-71	Constrained Operations Forecast Average Annual Day .....	2-78
2-72	Aircraft Seating Ranges By Selected Aircraft Type .....	2-80
2-73	Examples of Large Aircraft In Selected Short-Haul Markets .....	2-81
2-74	Constrained Forecast Markets By Grouping .....	2-81
2-75	Commuter Market Options/Travel Distance to SFO .....	2-82
2-76	20-Minute Delay Threshold Annual Passenger Losses .....	2-83
2-77	20-Minute Delay Threshold Projected Annual Passenger Reductions .....	2-84
2-78	Daily Flights By Scenario by Year and by Market – Commuter and West Markets .....	2-84
2-79	20-Minute Delay Threshold – Annual Passenger Losses .....	2-85
2-80	20-Minute Delay Threshold Total Annual Passenger Reductions .....	2-85
2-81	Daily Flights by Scenario by Year and by Market (Non-West Markets) .....	2-87
2-82	Oct-Nov 2001 SFO Traffic Compared to Oct-Nov 2000 .....	2-92
2-83	Comparison of Passenger Forecasts Passenger Forecasts for Individual Airports and Bay Area Total .....	2-93
2-84	Comparison of Operations Forecasts Aircraft Operations Forecasts for Individual Airports and Bay Area Total .....	2-94
2-85	Gate Allocations and Utilization (1999) .....	2-96
2-86	Passenger Revenue by Market Year Ended First Quarter 2001 .....	2-98
2-87	Passenger Projections: Unconstrained .....	2-103
2-88	Passenger Projections: 30 Slot Case .....	2-104
2-89	Passenger Projections: 34 Slot Case .....	2-105
2-90	Passenger Projections: 38 Slot Case .....	2-106
2-91	Passengers Relative to Unconstrained Forecast .....	2-106
2-92	International Passenger Projections: Unconstrained .....	2-107
2-93	Passenger Projections: 30 Slot Case .....	2-108
2-94	Passenger Projections: 34 Slot Case .....	2-109
2-95	Passenger Projections: 38 Slot Case .....	2-110
2-96	Passenger Enplanement Forecasts .....	2-111
2-97	Air Freight Forecast Summary .....	2-112

2-98	Air Cargo Aircraft Operations Summary .....	2-113
2-99	Summary of Annual Operations Projections: Unconstrained .....	2-114
2-100	Summary of Annual Operations Projections: 30 Slot Case .....	2-114
2-101	Summary of Annual Operations Projections: 34 Slot Case .....	2-115
2-102	Summary of Annual Operations Projections: 38 Slot Case .....	2-115
2-104	Average Day Peak Month Operations 2007 .....	2-117
2-103	Average Day Peak Month Operations 2007 .....	2-117

### Chapter 3 Dimensional Requirements and Alternative Layouts

3-1	Aircraft Approach Categories .....	3-1
3-2	Airplane Design Groups .....	3-1
3-3	Forecasted NLA Operations .....	3-2
3-4	Wind Data from January 1992 to December 1999 .....	3-2
3-5	Runway Wind Coverage .....	3-2
3-6	Runway Takeoff Lengths .....	3-6
3-7	Runway Landing Lengths .....	3-6
3-8	Runway Separation Standards (Approach Category C and D) .....	3-7
3-9	Runway Design Standards .....	3-7
3-10	Taxiway Design Standards .....	3-7
3-11	Runway Protection Zone Dimensions .....	3-8
3-12	Taxiway Fillet Dimensions .....	3-11

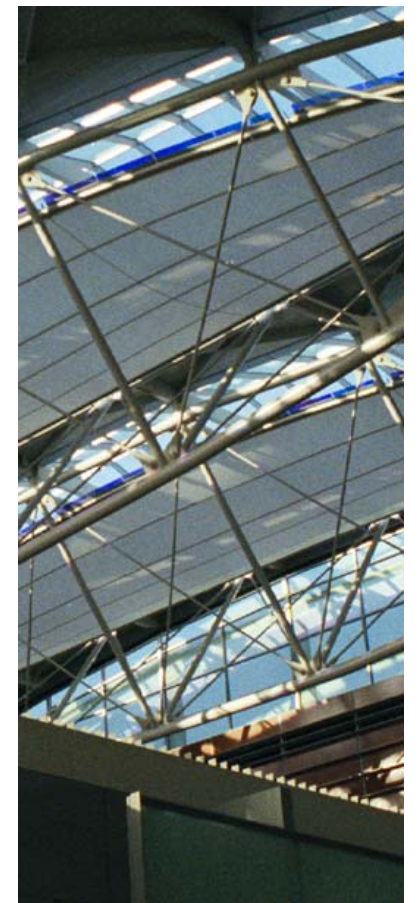
### Chapter 4 Obstructions and TERPS Analyses

4-1	Dimensions of FAR Part 77 Imaginary Surfaces .....	4-2
4-2	Runway End Coordinates .....	4-10

### Chapter 5 Airspace and Modeling Assumptions

5-1	Summary of SFO Runway Operating Alternatives .....	5-1
5-2	Daily Operations Total for Modeled Demand Years .....	5-4
5-3	SFO Daily Operations Total for Constrained Demand .....	5-4
5-4	SFO Daily Operations Total for Demand Management Alternative .....	5-4
5-5	Arrival and Departure Runways .....	5-6
5-6	Weather Categories and Occurrence Rate .....	5-6
5-7	Component Weather Definition .....	5-6
5-8	Weather/Operating Plan Occurrence .....	5-7
5-9	No-Build Alternative Weather Percentage Distribution .....	5-7
5-10	No-Build (Technology) Alternative Weather Percentage Distribution .....	5-7
5-11	All Other Alternatives Weather Percentage Distribution .....	5-7
5-12	Departure Runway Utilization No-Build, No-Build (Technology), A-3 Alternative .....	5-8
5-13	Heavy Jet Departure Runway Utilization No-Build, No-Build (Soia), A-3 Alternative .....	5-8
5-14	All No-Build Alternatives West and All-West Plan Arrival Runways .....	5-8
5-15	Departure Runway Assignment .....	5-8
5-16	Heavy Jet Departure Runway Utilization for Reconfiguration Alternatives .....	5-9

## San Francisco International Airport





5-17	Crosswind/Tailwind Analysis Assumptions.....	5-9
5-18	Weather/Runway Operating Plan Distribution.....	5-9
5-19	Minimum SFO Final Approach Visual Separations (Nautical Miles).....	5-10
5-20	Aircraft Turn-Around Times.....	5-10
5-21	1999 Airline Gate Assignments.....	5-11
5-22	Expanded Terminal Airline Gate Assignments.....	5-11

**Chapter 6 Capacity/Delay Results**

6-1	Average Annual Delay Select Alternatives Comparison.....	6-1
6-2	Average Annual Delay No-Build Alternatives Comparison.....	6-2
6-3	Average Annual Delay Initial Build Alternatives Comparison.....	6-3
6-4	2015 Average Annual Delay BX-Refined Derivatives Comparison.....	6-3
6-5	West Plan –VFR Select Alternatives 2015 Airspace Operations Average Travel Time and Delay.....	6-4
6-6	West Plan – VFR Select Alternatives 2015 Ground Operations Average Travel Time and Delay.....	6-5
6-7	West Plan – STRATUS Select Alternatives 2015 Airspace Operations Average Travel Time and Delay.....	6-6
6-8	West Plan – STRATUS Select Alternatives 2015 Ground Operations Average Travel Time and Delay.....	6-6
6-9	West Plan – IFR Select Alternatives 2015 Airspace Operations Average Travel Time and Delay.....	6-6
6-10	West Plan – IFR Select Alternatives 2015 Ground Operations Average Travel Time and Delay.....	6-7
6-11	All-West Plan – VFR Select Alternatives 2015 Airspace Operations Time and Delay.....	6-7
6-12	All-West Plan – VFR Select Alternatives 2015 Ground Operations Time and Delay.....	6-8
6-13	All-West Plan – STRATUS Select Alternatives 2015 Airspace Operations Average Travel Time and Delay.....	6-8
6-14	All-West Plan – STRATUS Select Alternatives 2015 Ground Operations Average Travel Time and Delay.....	6-8
6-15	Southeast Plan – IFR Select Alternatives 2015 Airspace Operations Average Travel Time and Delay.....	6-9
6-16	Southeast Plan – IFR Select Alternatives 2015 Ground Operations Average Travel Time and Delay.....	6-9
6-17	Airspace Usage.....	6-9
6-18	2015 Average Annual Delay Dynamic Airspace Comparison.....	6-11
6-19	2015 All-West Average Delay Runway 28L Open/Closed Comparison.....	6-11
6-20	2015 Average Annual Delay Crosswind Comparison.....	6-12
6-21	West Plan VFR Maximum Hourly Flow Rates.....	6-17
6-22	West Plan IFR Maximum Hourly Flow Rates.....	6-17
6-23	Southeast Plan IFR Maximum Hourly Flow Rates.....	6-17

6-24	All-West Plan (28L Closed) VFR Maximum Hourly Flow Rates.....	6-17
6-25	All-West Plan (28L Open) VFR Maximum Hourly Flow Rates.....	6-17
6-26	Overall Maximum Hourly Flow Rates.....	6-18
6-27	West Plan Runway Crossing Occurrences.....	6-20
6-28	Delayed Runway Crossing Occurrences.....	6-20
6-29	West Plan Average Runway Crossing Delay (minutes).....	6-20

**Chapter 7 Noise Analyses**

7-1	Percent Usage of Airport Plans.....	7-3
7-2	INM Runway Assignments: 2007, 2015, 2015 Number Above.....	7-4 thru 7-6
7-3	INM Grid Point Locations.....	7-16
7-4	CNEL Values at Gridpoints.....	7-19 thru 7-20
7-5	2000 Population Within 2015 CNEL Contours.....	7-20
7-6	Number of Aircraft Events Above 70 dBA at Gridpoints.....	7-39 thru 7-40

**Chapter 8 Airport Facilities**

8-1	ARFF Index Classifications.....	8-1
8-2	ARFF Vehicle Performance Data.....	8-4
8-3	Queuing Areas.....	8-11

**Appendix A Abbreviations and Acronyms**

(None)

**Appendix B Airport Codes and Cities**

(None)

**Appendix C Detailed Forecasts**

C-1	History of Scheduled Bay Area Aircraft Departures by Market.....	C-1 though C-4
C-1a	Estimation of Projected O/D Passenger, Outbound Passenger, and Seat Departures by Market (On File).....	C-5
C-2	Domestic Service Projections – Boston.....	C-6
C-3	Domestic Service Projections – New York City.....	C-7
C-4	Domestic Service Projections – Philadelphia.....	C-8
C-5	Domestic Service Projections – Washington D.C.....	C-9
C-6	Domestic Service Projections – Raleigh/Durham.....	C-10
C-7	Domestic Service Projections – Charlotte.....	C-10
C-8	Domestic Service Projections – Orlando.....	C-10
C-9	Domestic Service Projections – Miami.....	C-11
C-10	Domestic Service Projections – Tampa.....	C-11
C-11	Domestic Service Projections – Atlanta.....	C-12
C-12	Domestic Service Projections – Cincinnati.....	C-13
C-13	Domestic Service Projections – Columbia.....	C-13

C-14	Domestic Service Projections – Pittsburgh .....	C-13
C-15	Domestic Service Projections – Cleveland .....	C-14
C-16	Domestic Service Projections – Detroit .....	C-14
C-17	Domestic Service Projections – Milwaukee .....	C-14
C-18	Domestic Service Projections – Chicago .....	C-15
C-19	Domestic Service Projections – Indianapolis .....	C-16
C-20	Domestic Service Projections – Nashville .....	C-16
C-21	Domestic Service Projections – Memphis .....	C-16
C-22	Domestic Service Projections – New Orleans .....	C-16
C-23	Domestic Service Projections – St. Louis .....	C-17
C-24	Domestic Service Projections – Kansas City .....	C-17
C-25	Domestic Service Projections – Minneapolis .....	C-18
C-26	Domestic Service Projections – Omaha .....	C-18
C-27	Domestic Service Projections – Oklahoma City .....	C-18
C-28	Domestic Service Projections – Dallas/Ft. Worth .....	C-19
C-29	Domestic Service Projections – Austin .....	C-20
C-30	Domestic Service Projections – Houston .....	C-21
C-31	Domestic Service Projections – San Antonio .....	C-21
C-32	Domestic Service Projections – Denver .....	C-22
C-33	Domestic Service Projections – Billings .....	C-23
C-34	Domestic Service Projections – Spokane .....	C-23
C-35	Domestic Service Projections – Reno .....	C-24
C-36	Domestic Service Projections – Salt Lake City .....	C-25
C-37	Domestic Service Projections – Las Vegas .....	C-26
C-38	Domestic Service Projections – Albuquerque .....	C-27
C-39	Domestic Service Projections – El Paso .....	C-27
C-40	Domestic Service Projections – Phoenix .....	C-28
C-41	Domestic Service Projections – Tucson .....	C-29
C-42	Domestic Service Projections – Los Angeles .....	C-30
C-43	Domestic Service Projections – San Diego .....	C-31
C-44	Domestic Service Projections – Fresno .....	C-32
C-45	Domestic Service Projections – San Francisco .....	C-33
C-46	Domestic Service Projections – Sacramento .....	C-34
C-47	Domestic Service Projections – Redding .....	C-34
C-48	Domestic Service Projections – Eugene .....	C-34
C-49	Domestic Service Projections – Portland .....	C-36
C-50	Domestic Service Projections – Richland/Pasco .....	C-37
C-51	Domestic Service Projections – Seattle .....	C-38
C-52	Domestic Service Projections – Anchorage .....	C-39
C-53	Domestic Service Projections – Honolulu .....	C-40
C-54	Domestic Service Projections – Boise .....	C-41

## Appendix D Detailed Demand Management Forecast

(None)

## Appendix E Additional Noise Analyses

E-1	Percent Usage of Airport Plans INM 6.0c, Dynamic Airspace .....	E-1
E-2	INM Runway Assignments – 2015 Activity Level .....	E-1
E-3	CNEL Values at Gridpoints: INM 6.0c, Dynamic Airspace .....	E-2
E-4	Number of Aircraft Events Above 70 dBA at Gridpoints .....	E-3
E-5	2000 Population Within 2015 CNEL Contour .....	E-4
E-6	Percent Usage of Airport Plans .....	E-4
E-7	INM Runway Assignments – 2015 Activity Level .....	E-5
E-8	CNEL Values at Gridpoints .....	E-6
E-9	Number of Aircraft Events Above 70 dBA at Gridpoints .....	E-7
E-10	1990 Population Within 2015 CNEL Contour .....	E-7

## Appendix F ATCT Siting Report

(None)

## Appendix G FAA Letters

(None)

## San Francisco International Airport

